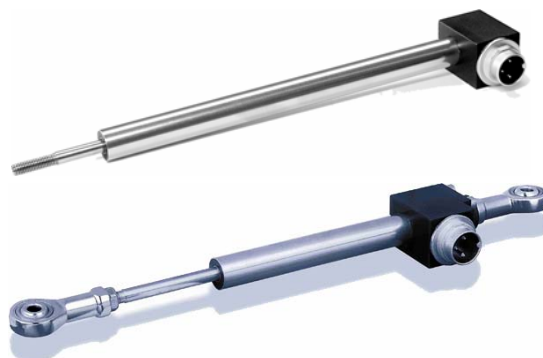


## Inductive displacement transducer

### Series SM28

- Extended measuring stroke according to series SM26
- Stroke up to 360mm
- Housing diameter 12mm
- External electronic modules
- Protection class IP66
- Accuracy 0,5%



#### Construction and operating principle:

A nickel iron core will be moved linear inside a coil. The displacement of the core leads to an inductance variation in parts of the coil. That generates more information about the position of the core than a linear variable differential transformer or half-bridge transformers. An external electronic circuit converts the variation into a signal proportional to the displacement.

#### Standard measuring strokes in mm:

80	100	170	240	360
----	-----	-----	-----	-----

#### Standard dimensions and masses

stroke mm	L1 mm	L2 mm	masse	masse plunger
80	70	140	xxg	19g
100	80	170		
170	115	250	xxg	31g
240	150	350	xxg	41g
360	210	500	xxg	56g

L1: Plunger in central position

#### Standard version:

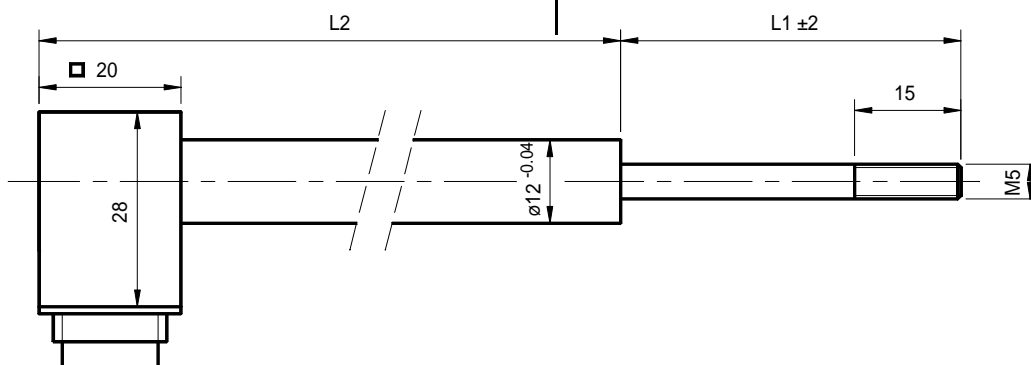
SM280 ..S	with plug
-----------	-----------

#### Technical data:

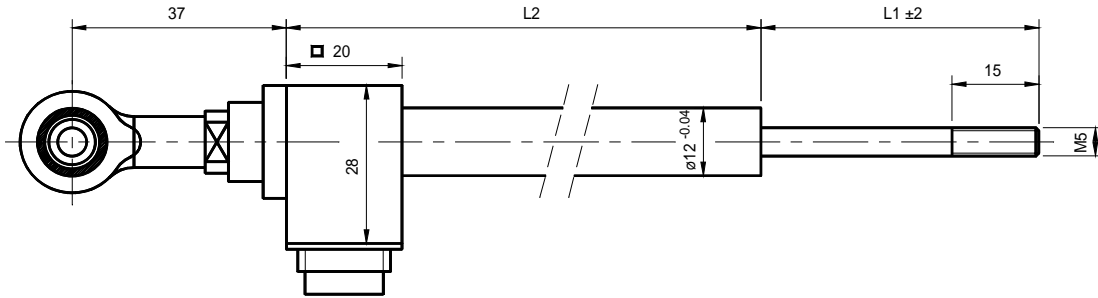
(using our electronic modules)

Accuracy	< 0,5%
Temperature drift	< 0,01% / °C
Temperature range with plug	-40°C bis +85°C
Resistance to shock	250g SRS 20-2000Hz
Resistance to vibration	20g rms (50g peak)
Protection class	IP66

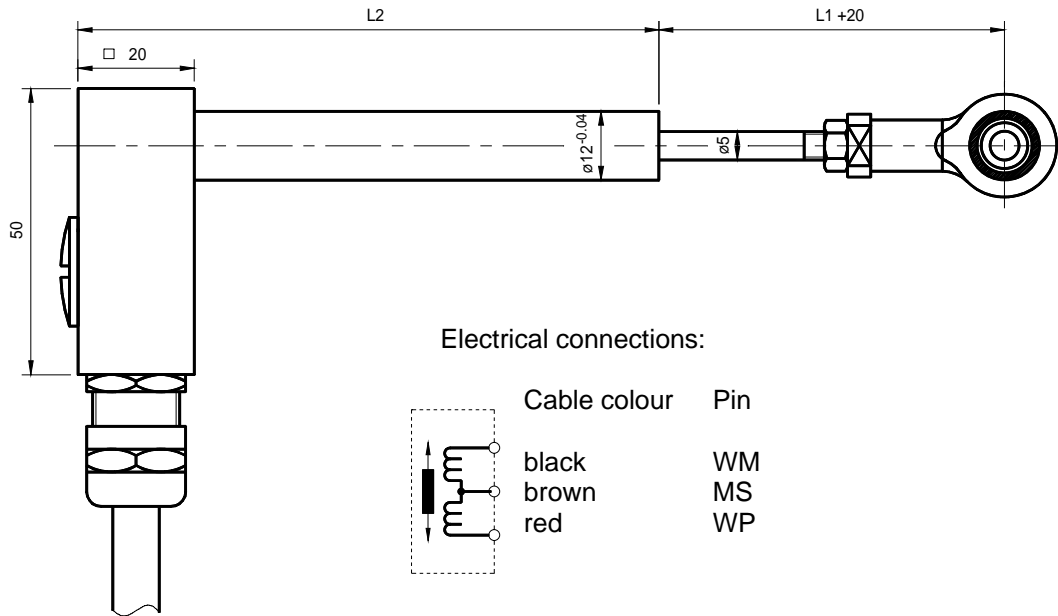
#### Model SM280 S



**Model SM280 ..SH** (with plug, Binder Ser.723 and ball joint M5 on end of the case)



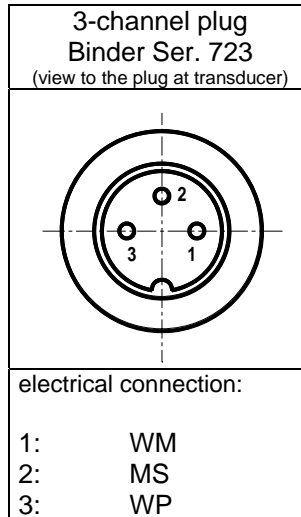
**Model SM280 ..GK** (IP67 with ball joint and Pg9-fastener with cable 3x 0.56mm<sup>2</sup>)



**Materials:**

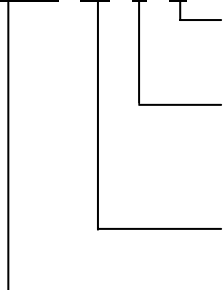
External and internal tube	Stainless steel
Plunger	Stainless steel
Core	Stainless nickel iron alloy
Connector case	Alu, black anodised
Connector contacts	Gold plated

**Electrical connections**



### Order code

SM280 . 80 . 2 . S



S: Plug

Accuracy:  
2: 0.50%

Measuring stroke

Series

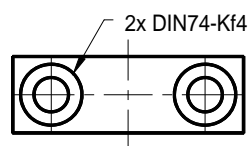
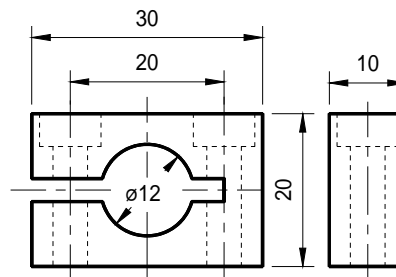
Order codes for customer specified versions will be named at plant.

#### z.B.: SM280.80.2.S

Displacement transducer Series SM280, 80mm stroke, Accuracy 0.5%, plug

### Mounting block SM906.260

(incl. 2 mounting screws M4x25 DIN912 VA)



### Excitation and signal processing

SM10: Oscillator / Demodulator in metal case

SM11: SM10 on Eurocard

SM12: Oscillator / Demodulator without case  
2 channels

SM14: Eurocard up to 7 channels

#### Additional versions:

- Ball joint on the plunger or/and at the case

Vertrieb durch



a.b.jödden gmbh  
Von-Beckerath-Platz 4  
D-47799 Krefeld  
Fon 02151 516259- 0  
info@ abjoedden.de  
www.abjoedden.de