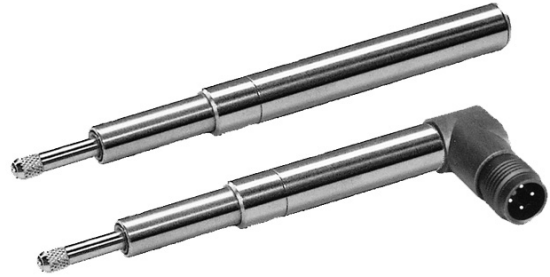


## Inductive displacement sensor

### Precision indication gauge

**SM220**

**SM222**



- Clamping shank 8mm
- Stroke up to 8mm
- External electronic modules
- Protection class IP66
- Accuracy 0,5% or 0,25%

#### Structure an function:

Inside a coil a NiFe core is moved axially. The position of the core in each case causes corresponding inductivity distribution in the two coil halves, which is converted into a stroke-proportional signal by an external electronics system.

#### Standard measuring stroke:

4 mm	8 mm
------	------

#### Version / Dimensions:

	SM220.4 SM222.4	SM220.8 SM222.8
Measuring stroke	4 mm	8 mm
Mech. total travel	12 mm	12 mm
Pre - travel	3.5 mm	1.5 mm
Over - travel	4.5 mm	2.5 mm
Spring force (in central position)	~1.7 N	~1.7 N
Mass	~40 g	~40 g

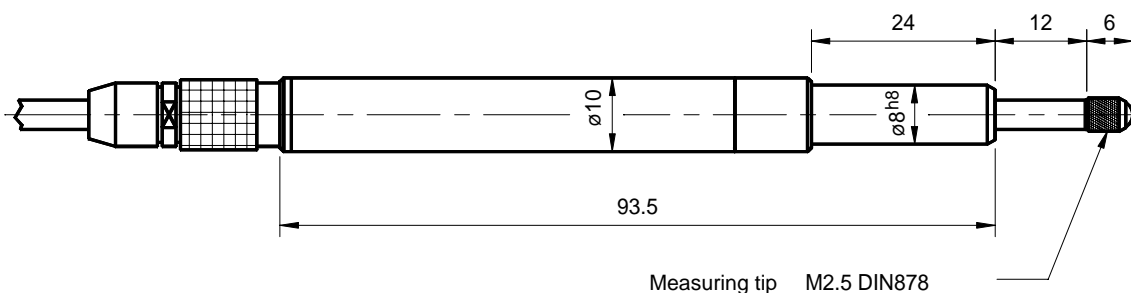
#### Technical data:

(using our electronic modules)

Accuracy	< 0,5% oder 0,25%
Temperature drift	< 0,005% / °C
Temperature range with connector	-20°C bis +85°C
Resistance to shock	250g SRS 20-2000Hz
Resistance to vibration	20g rms (50g peak)
Sensitivity SM220	440 mV / mm (±10%)
Sensitivity SM222	400 mV / mm (±10%)
Protection class	IP66

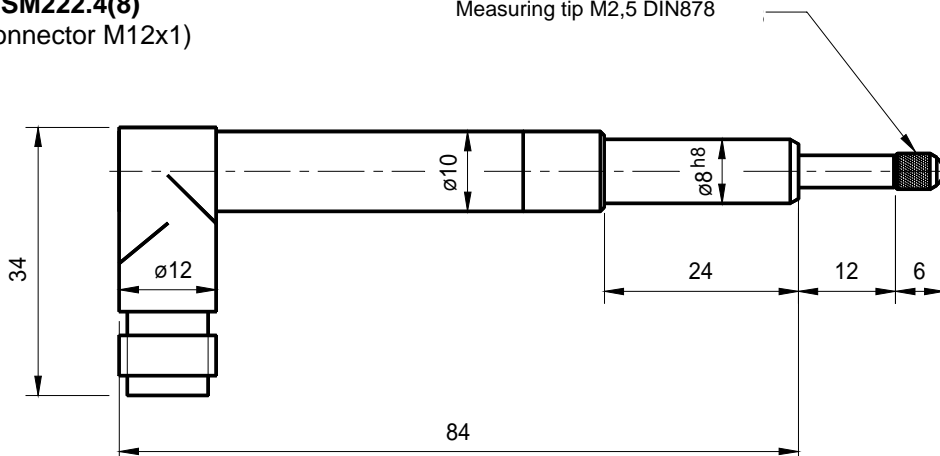
#### Precision indication gauge model SM220.4(8)

(with connector Lemo 3-pol.)



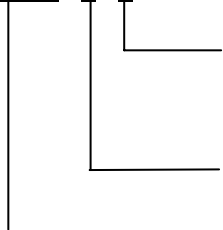
**Precision indication gauge  
model SM22.4(8)  
(with connector M12x1)**

Measuring tip M2,5 DIN878



**Ordering designation**

SM220 . 8 . 2



Accuracy:

- 1: 0.25%
- 2: 0.50%

Measuring stroke:

Series

Ordering designations for customer-specific versions will be allotted by the factory.

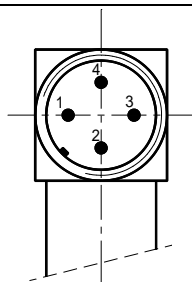
**e.g.: SM220.8.2**

Precision indication gauge of the 220 series,  
8mm measuring stroke, accuracy 0.5%

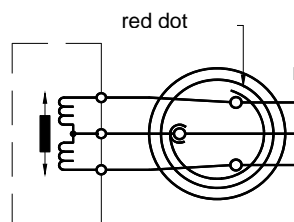
**Electrical connections:**

**Series SM222:**

- 1: WP
- 2: n.c.
- 3: WM
- 4: MS



**Series SM220:**



Cable colour	electronic
green	WP
white	MS
brown	WM

**Other versions:**

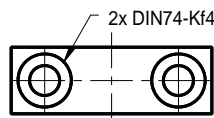
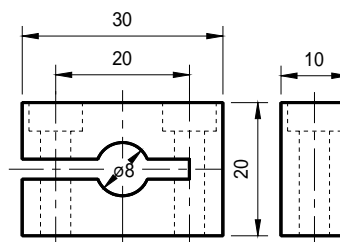
Indication gauge with bellows

**Power supply and signal processing:**

- SM10: Oscillator/Demodulator in metal housing
- SM11: SM10 on Eurocard
- SM12: Oscillator / Demodulator without housing up to 2 channels
- SM14: Eurocard up to 7 channels

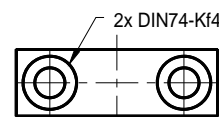
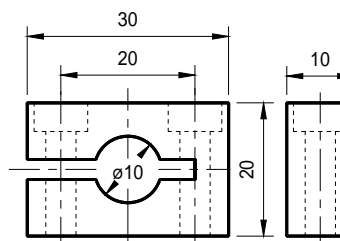
**Mounting block SM906.200**

(incl. 2 fastening screws M4x25 DIN912 VA)



**Mounting block SM906.202**

(incl. 2 fastening screws M4x25 DIN912 VA)



Your business partner:

a.b.jödden gmbh  
Von-Beckerath-Platz 4  
D-47799 Krefeld  
Fon 02151 516259- 0  
Fax 02151 516259-20  
info@ abjoedden.de  
www.abjoedden.de

